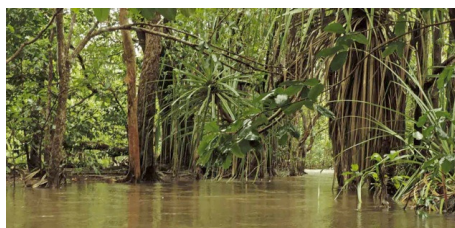


DARWIN'S TRANSIENT POPULATIONS AND SEXUAL EXPLOITATION: COMPLEXITIES FOR INTERVENTION

Lynette McKee MAPS
APS NT
Psychology of Trauma Conference
2015

ACKNOWLEDGEMENT OF COUNTRY



rapidcreek.org.au

© Lynette McKee 2015

2

TODAY YOU WILL.....

- ◉ GAIN understanding about Darwin's *transient populations*
- ◉ EXPLORE implications of *sexual exploitation*
- ◉ RECOGNISE *intervention complexities*
- ◉ IDENTIFY future *intervention strategies*



© Lynette McKee 2015

SEXUAL ASSAULT REFERRAL CENTRE



© Lynette McKee 2015

4

SEXUAL ASSAULT REFERRAL CENTRE

provide counselling & medical interventions for

- Acute sexual assault
- Historical sexual assault
- Females & males
- Children
- Adolescents
- Adults



© Lynette McKee 2015

5

ACUTE INTERVENTION

- Medical
 - Assessment & treatment
 - Forensic evidence collection
- Counselling
 - Manage immediate psychological impact
 - Psychological first aid
- Provide
 - SARC contacts
 - Referral options
 - Psychoeducation

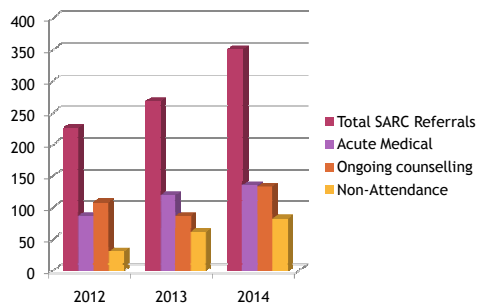


teen.fightforzero.org

© Lynette McKee 2015

6

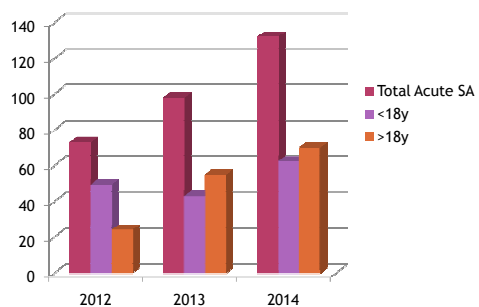
ALL SARC REFERRALS



© Lynette McKee 2015

7

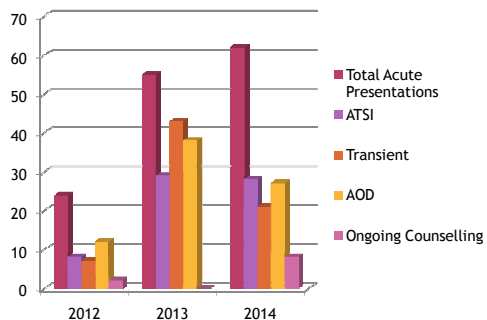
ACUTE SEXUAL ASSAULT INTERVENTION



© Lynette McKee 2015

8

ACUTE INTERVENTION DEMOGRAPHICS



© Lynette McKee 2015

9

REMEMBER



© Lynette McKee 2015

10

DARWIN A PLACE TO BE



© Lynette McKee 2015

11

TRANSIENT POPULATIONS

◉ Who are the transient populations?

© Lynette McKee 2015

12

STUDENTS



© Lynette McKee 2015

13

FLY-IN-FLY-OUT WORKERS



© Lynette McKee 2015

14

BACKPACKERS



© Lynette McKee 2015

15

SEX WORKERS



© Lynette McKee 2015

16

HOMELESS



© Lynette McKee 2015

17

DEFENCE PERSONNEL



© Lynette McKee 2015

18

CARAVAN & CAMPERS



© Lynette McKee 2015

19

ITINERANT LIVING



© Lynette McKee 2015

20

TRAVELLERS



© Lynette McKee 2015

21

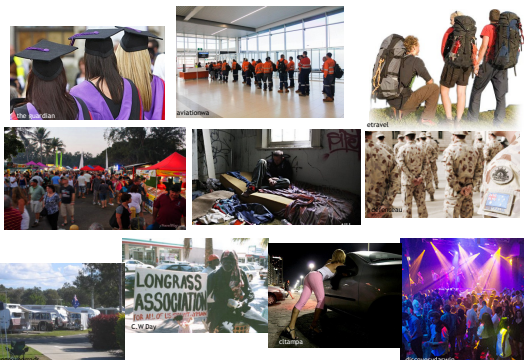
NIGHT CLUBBERS



© Lynette McKee 2015

22

WHO ARE THE TRANSIENT POPULATIONS?



© Lynette McKee 2015

23

WHAT IS SEXUAL EXPLOITATION

- Taking advantage of a person's vulnerability, manipulation of differential power, or betrayal of trust for sexual purposes
- Dominant position of person that allows them to force or coerce another into sexual activity

© Lynette McKee 2015

24

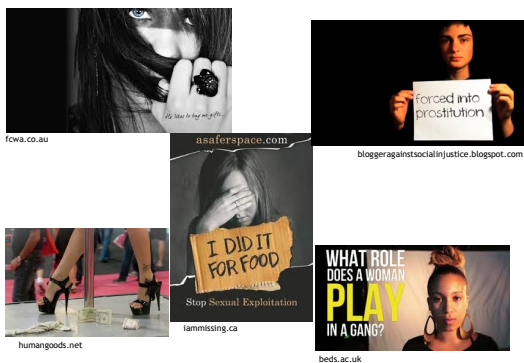
SEXUAL EXPLOITATION INCLUDES

- ◉ Sex for favours
 - Food
 - Money
 - Shelter
 - Alcohol
 - Drugs
 - Transport
- ◉ Rape
- ◉ Assault
- ◉ Violence
- ◉ Deception
- ◉ Debt bondage
- ◉ Coercion
- ◉ Intimidation
- ◉ Drink spiking
- ◉ Victimisation
- ◉ Forced labour
- ◉ Slavery
- ◉ Threats

© Lynette McKee 2015

25

SEXUAL EXPLOITATION



© Lynette McKee 2015

26

SEXUAL EXPLOITATION VULNERABILITY INCREASES WITH?

- ◉ Homelessness
- ◉ Shared accommodation
- ◉ AOD use
- ◉ Poor local support networks
- ◉ Financial dependence & constraints
- ◉ Lack of local knowledge
- ◉ Employment constraints
- ◉ Travelling
- ◉ Domestic Violence
- ◉ Disabilities - physical & mental
- ◉ Fear of reprisal
- ◉ Partying
- ◉ Trusting acquaintances or work colleagues

© Lynette McKee 2015

27

INTERVENTION COMPLEXITIES

- Acute
 - Informed consent
 - AOD impairment
 - Choosing to leave
 - Employment risk
 - Reporting & identifying
- Ongoing Counselling
 - Delayed disclosure
 - Ongoing intervention
 - Reducing vulnerability

© Lynette McKee 2015

28

NEGATIVE CLIENT OUTCOMES

- Self blame & guilt
- Re-victimisation
- Perpetrator's not accountable
- Health & infection risks
- Retribution
- Hopelessness & helplessness
- Powerlessness/Limited positive goal focus
- Development of PTSD

© Lynette McKee 2015

29

IS THERE A SOLUTION?

- How can potential PTSD development after an acute presentation be minimised?
- How can the complexities of intervention be addressed?
- Is accessing counselling after PTSD has developed the only option?

© Lynette McKee 2015

30

SOME IDEAS

Practitioner Strategies

- Practitioner awareness of vulnerabilities
- Appropriate interventions for population group
- Little is better than nothing
- What is the 'problem' for client

Community Development

- Social awareness
- Community awareness
- Protective behaviours for adults
- Resilience
- Party awareness

© Lynette McKee 2015

31

TALK ABOUT SEXUAL EXPLOITATION



© Lynette McKee 2015

32

THE QUESTIONS

- Why don't people engage in counselling following acute sexual assault?
- Why is there a high representation of sexual assault in ATSI people?
- Does AOD use predispose people to sexual assault/exploitation?

© Lynette McKee 2015

33
